



UNIVERSITY OF CAMBRIDGE INTERNATIONAL EXAMINATIONS  
 General Certificate of Education  
 Advanced Subsidiary Level and Advanced Level

CANDIDATE  
 NAME

CENTRE  
 NUMBER

--	--	--	--	--

CANDIDATE  
 NUMBER

--	--	--	--



**BIOLOGY**

**9700/21**

Paper 2 Structured Questions AS

**May/June 2012**

**1 hour 15 minutes**

Candidates answer on the Question Paper.

No Additional Materials are required.

**READ THESE INSTRUCTIONS FIRST**

Write your Centre number, candidate number and name in the spaces provided at the top of the page.

Write in dark blue or black ink.

You may use a soft pencil for any diagrams, graphs or rough working.

Do not use red ink, staples, paper clips, highlighters, glue or correction fluid.

**DO NOT WRITE IN ANY BARCODES.**

Answer **all** questions.

At the end of the examination, fasten all your work securely together.

The number of marks is given in brackets [ ] at the end of each question or part question.

For Examiner's Use	
1	
2	
3	
4	
5	
6	
<b>Total</b>	

This document consists of **15** printed pages and **5** blank pages.





1 Name as precisely as you can the structure described in each of the following statements.

(a) The blood vessel that transports deoxygenated blood from the heart.  
..... [1]

(b) The cell that ingests and digests cell debris and bacteria in the lungs.  
..... [1]

(c) The cell that secretes antibodies.  
..... [1]

(d) The epithelial cell that secretes mucus in the trachea.  
..... [1]

(e) The tissue that prevents the collapse of the trachea during inhalation.  
..... [1]

[Total: 5]

2 Fig. 2.1 shows a drawing made from an electron micrograph of two adjacent cells in a leaf.

For  
Examiner's  
Use

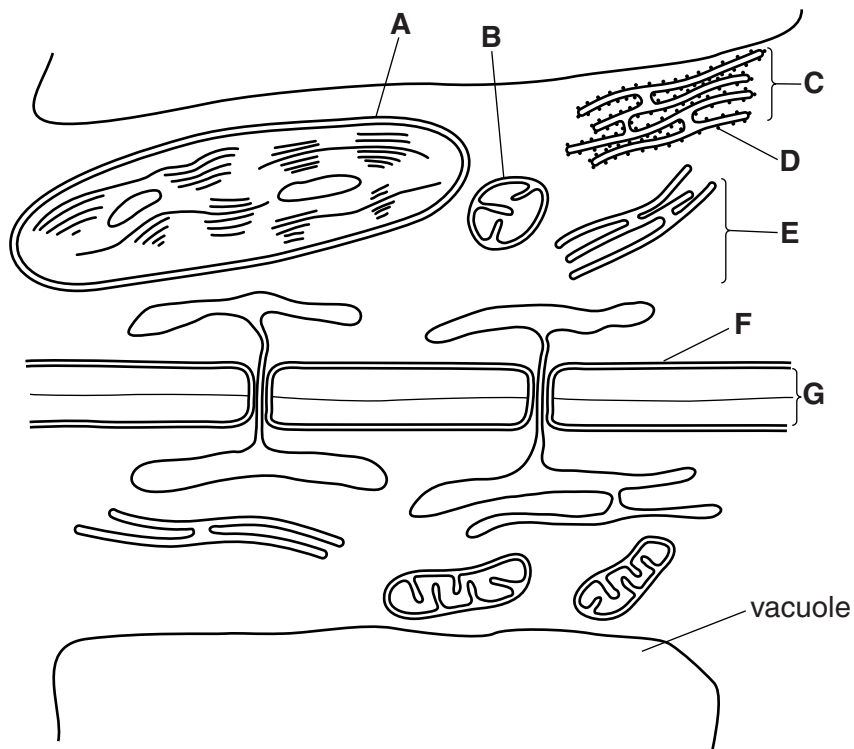


Fig. 2.1

(a) Structures **A** and **B** are both visible using the light microscope, but the internal detail of these organelles shown in Fig. 2.1 is only visible using the electron microscope.

Explain why the internal details of structures **A** and **B** are only visible when using the electron microscope and not when using the light microscope.

.....

.....

.....

.....

.....

.....

.....

.....

.....

.....

[3]



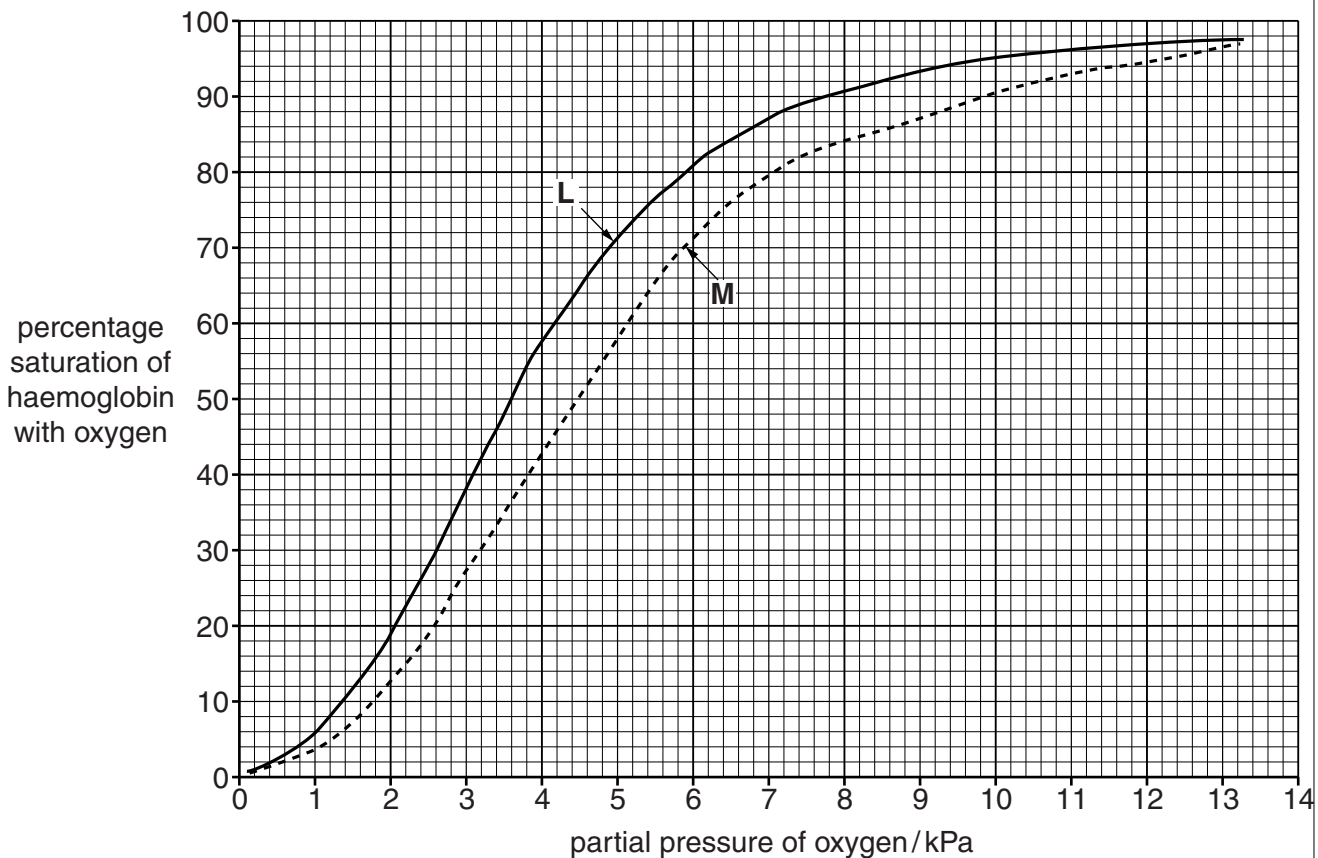
- 3 Haemoglobinopathies are inherited conditions linked to the structure and function of haemoglobin. Sickle cell anaemia is one of these conditions in which the transport and delivery of oxygen to tissues is less than normal.

An investigation was carried out to discover the effect of sickle cell anaemia on the ability of blood to carry oxygen. Blood samples were taken from two people:

- person **L** without sickle cell anaemia
- person **M** with sickle cell anaemia.

The percentage saturation of haemoglobin with oxygen was determined over a range of partial pressures of oxygen.

Fig. 3.1 shows oxygen haemoglobin dissociation curves for the two blood samples.



**Fig. 3.1**

- (a) P50 is the partial pressure of oxygen at which haemoglobin is 50% saturated with oxygen. It is taken as a measurement of the affinity of haemoglobin for oxygen.

- (i) State the P50 for the two blood samples, **L** and **M**.

**L** .....

**M** ..... [1]

(ii) With reference to Fig. 3.1, describe how the dissociation curve for person **M** differs from the dissociation curve for person **L**.

.....  
.....  
.....  
.....  
.....  
..... [3]

(b) Explain the advantage of the position of the dissociation curve for people with sickle cell anaemia.

.....  
.....  
.....  
.....  
.....  
..... [3]

(c) The partial pressure of oxygen in the lungs at sea level is about 13.5 kPa. At an altitude of 3000 metres the partial pressure of oxygen in the lungs is about 7.5 kPa.

When people move from sea level to high altitude they become adapted to the low partial pressure of oxygen.

Describe **and** explain how humans become adapted to the low partial pressure of oxygen at high altitude.

.....  
.....  
.....  
.....  
.....  
.....  
.....  
.....  
.....  
.....  
..... [4]

(d) Vaccination is used to control the spread of diseases, such as measles.

Explain why vaccination cannot be used to prevent sickle cell anaemia.

*For  
Examiner's  
Use*

.....

.....

.....

..... [2]

[Total: 13]



**BLANK PAGE**

**Question 4 starts on page 10**



(b) With reference to Fig. 4.1, identify the aspects of protein structure that are shown and those that are **not** shown.

*aspects of protein structure shown*

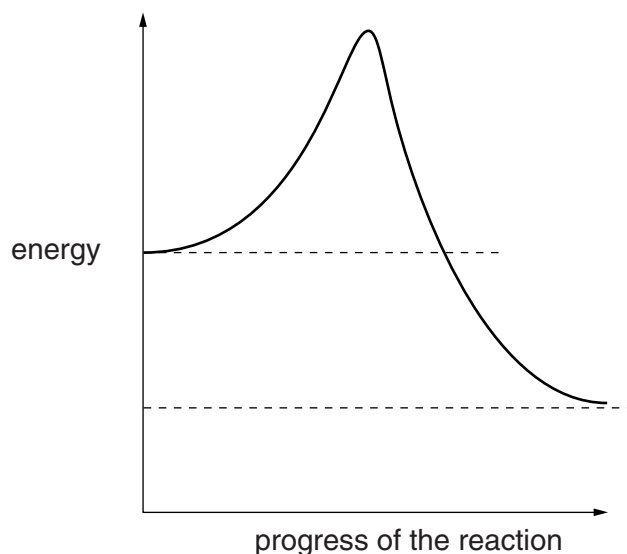
.....  
.....  
.....  
.....

*aspects of protein structure not shown*

.....  
.....  
.....  
.....

[3]

Fig. 4.2 shows the changes in energy during the progress of an uncatalysed reaction.



**Fig. 4.2**

(c) (i) Draw on Fig. 4.2 a curve to show changes in energy during the progress of the same reaction when catalysed by an enzyme. [2]

(ii) State the term given to the energy level that must be overcome before a reaction can progress.

..... [1]

(d) Antibiotic resistance is a serious worldwide problem.

*For  
Examiner's  
Use*

Suggest how antibiotics can be used effectively to avoid the development of widespread resistance in bacteria.

.....

.....

.....

..... [2]

[Total: 11]

**BLANK PAGE**

**Question 5 starts on page 14**

- 5 The slime mould, *Dictyostelium discoideum*, is a eukaryote and a decomposer of protein-rich material.

For  
Examiner's  
Use

Fig. 5.1 shows the life cycle of *D. discoideum*.

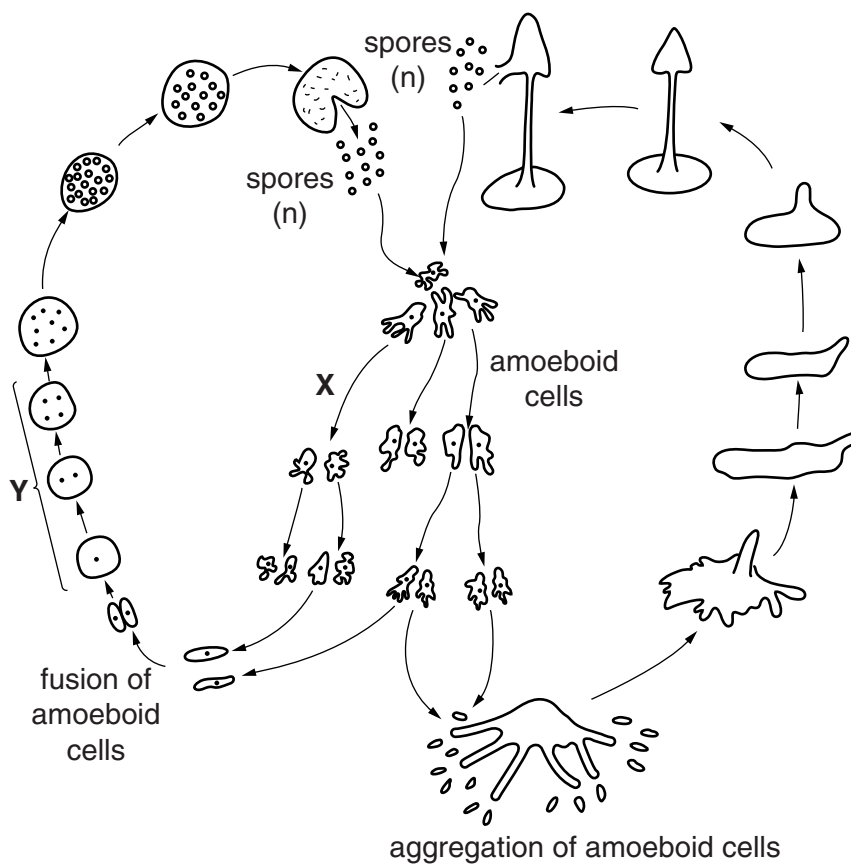


Fig. 5.1

- (a) State the type of nuclear division that occurs at X and at Y.

X .....

Y ..... [1]

- (b) State what is meant by the term *reduction division* and explain why this division is necessary in a life cycle, such as that shown in Fig. 5.1.

.....  
 .....  
 .....  
 .....  
 ..... [2]

- (c) The amoeboid cells of *D. discoideum* feed on protein-rich material and break it down to form ammonium ions ( $\text{NH}_4^+$ ). The cell membranes of *D. discoideum* have transporter proteins that are responsible for the excretion of ammonium ions.

Describe what happens to the ammonium ions excreted by *D. discoideum* into the soil.

.....  
.....  
.....  
.....  
.....  
..... [3]

- (d) Suggest why a transporter protein is required for the removal of ammonium ions from *D. discoideum*.

.....  
.....  
.....  
..... [2]

[Total: 8]

6 Fig. 6.1 shows part of a DNA molecule.

For  
Examiner's  
Use

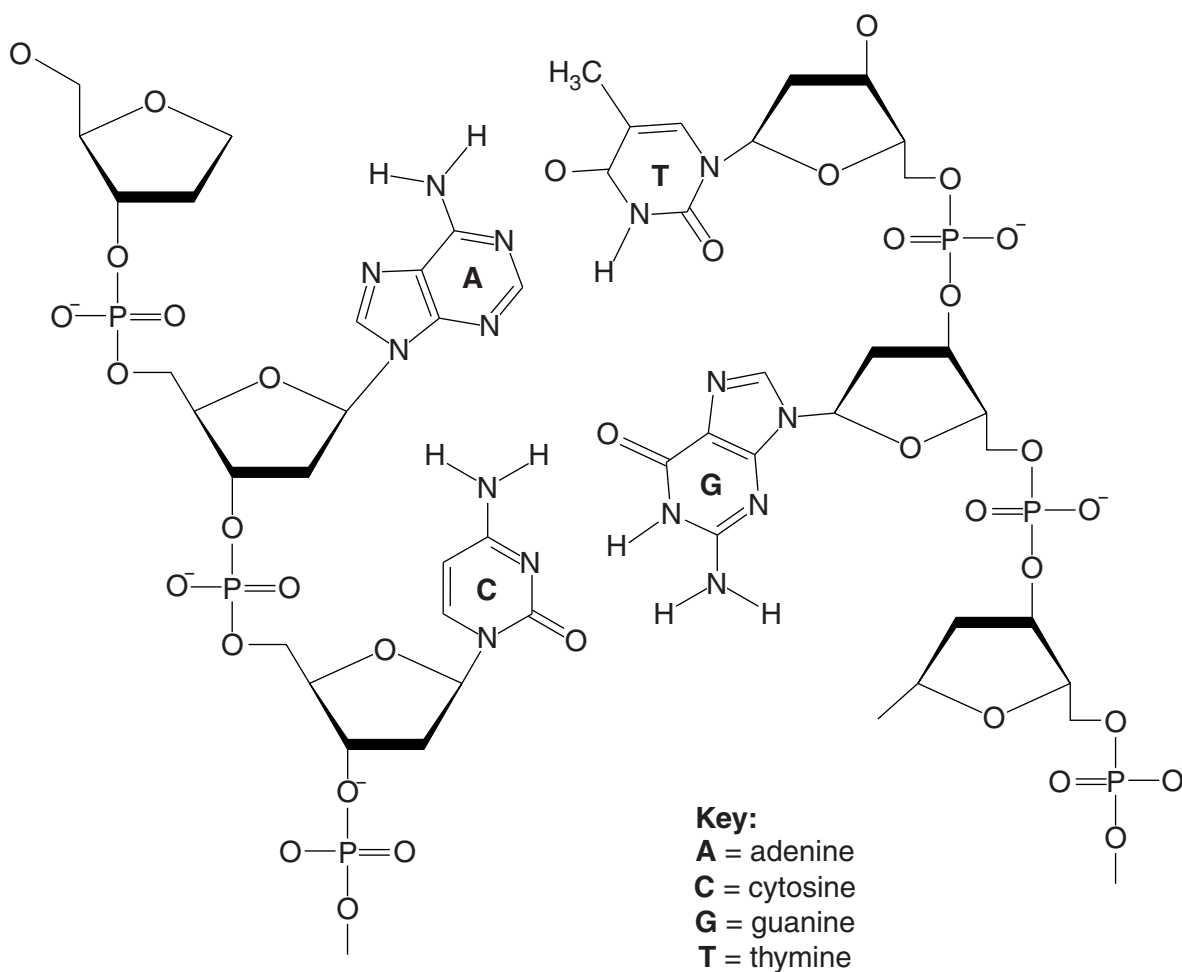


Fig. 6.1

(a) (i) Complete Fig. 6.1 by drawing on the hydrogen bonds between the two base pairs shown. [2]

(ii) State the importance of hydrogen bonding in DNA structure.

.....

.....

.....

.....

.....

..... [2]



In the 1950s, Erwin Chargaff determined the relative quantities of the four bases in DNA in different organisms. His results provided important evidence for the model of DNA proposed by James Watson and Francis Crick in 1953. Some of Chargaff's data is shown in Table 6.1.

**Table 6.1**

<b>organism</b>	<b>percentage of adenine</b>	<b>percentage of thymine</b>	<b>percentage of guanine</b>	<b>percentage of cytosine</b>
<i>Escherichia coli</i> (bacterium)	24.7	23.6	26.0	25.7
a yeast	31.3	32.9	18.7	17.1
wheat	27.3	27.1	22.7	22.8
octopus	33.2	31.6	17.6	17.6
sea urchin	32.8	32.1	17.7	17.3
chicken	28.0	28.4	22.0	21.6
human	29.3	30.0	20.7	20.0

(b) With reference to Fig. 6.1, explain how the data in Table 6.1 helps to confirm the arrangement of bases in DNA.

.....  
.....  
.....  
.....  
.....  
.....  
.....  
.....  
.....  
..... [3]

(c) Table 6.2 shows Chargaff's data for a virus.

For  
Examiner's  
Use

**Table 6.2**

organism	percentage of adenine	percentage of thymine	percentage of guanine	percentage of cytosine
a virus	24.0	31.2	23.3	21.5

- (i) State how the result for the virus differs from the results for all the organisms given in Table 6.1.

.....  
 .....  
 ..... [1]

- (ii) Suggest why the results for the virus are different from all the other organisms.

.....  
 ..... [1]

[Total: 9]



**BLANK PAGE**

---

Permission to reproduce items where third-party owned material protected by copyright is included has been sought and cleared where possible. Every reasonable effort has been made by the publisher (UCLES) to trace copyright holders, but if any items requiring clearance have unwittingly been included, the publisher will be pleased to make amends at the earliest possible opportunity.

University of Cambridge International Examinations is part of the Cambridge Assessment Group. Cambridge Assessment is the brand name of University of Cambridge Local Examinations Syndicate (UCLES), which is itself a department of the University of Cambridge.